

MAIN CHARACTERISTICS

Manufacturer: JENBACHER
Model: J312 GS Version:C21
Power: 646 kW / 1.500 rpm
Serial number: 4360741
Design number: J C786
Year of manufacture: 2005
Speed governor: Heinzmann STG-10-01
Turbocharger type: ABB RR131-14
Generator: STAMFORD- 910 kVA – 50 Hz
S/N: 0192570/002

**JENBACHER
J312 GS**

Power: 646kW

**Heinzmann
STG10-01**

AVAILABLE EQUIPMENT

- ✓ Engine
- ✓ Generator
- ✓ Skid
- ✓ Turbocharger
- ✓ Plate cooler
- ✓ Gas Train
- ✓ Exhaust vessel

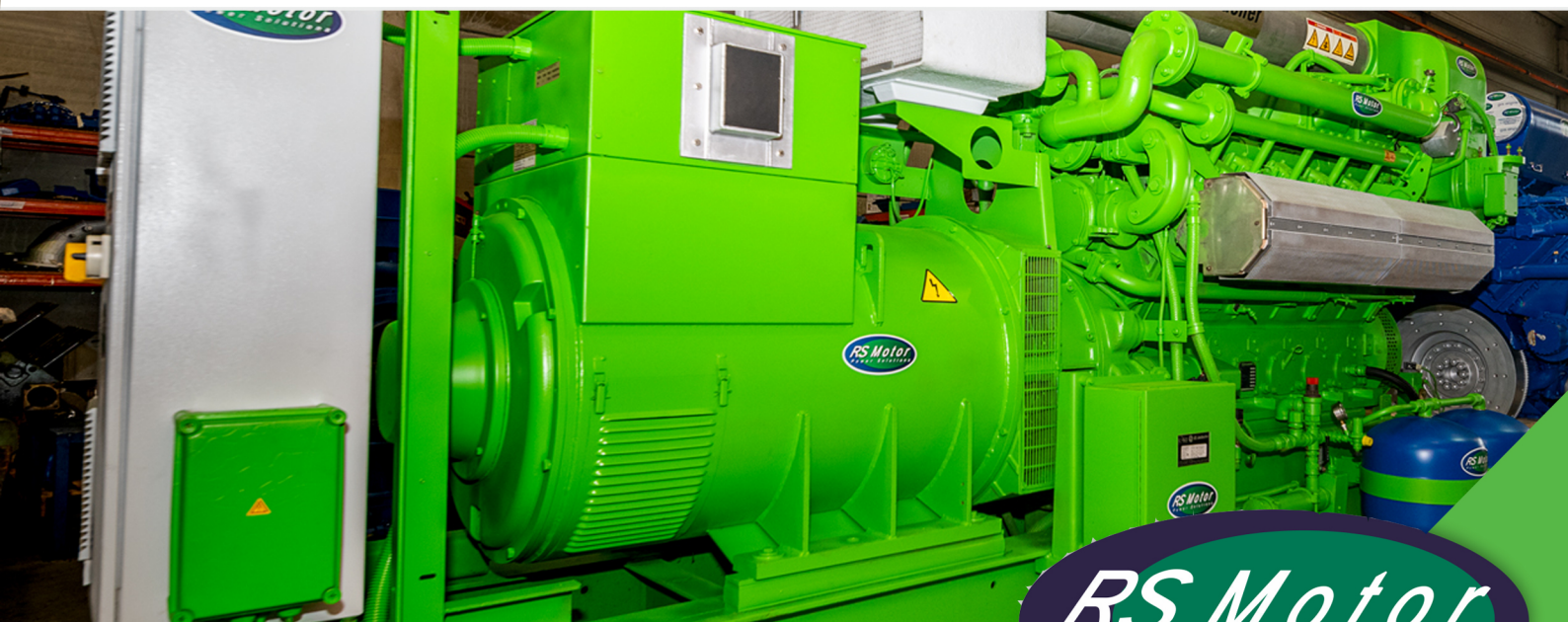
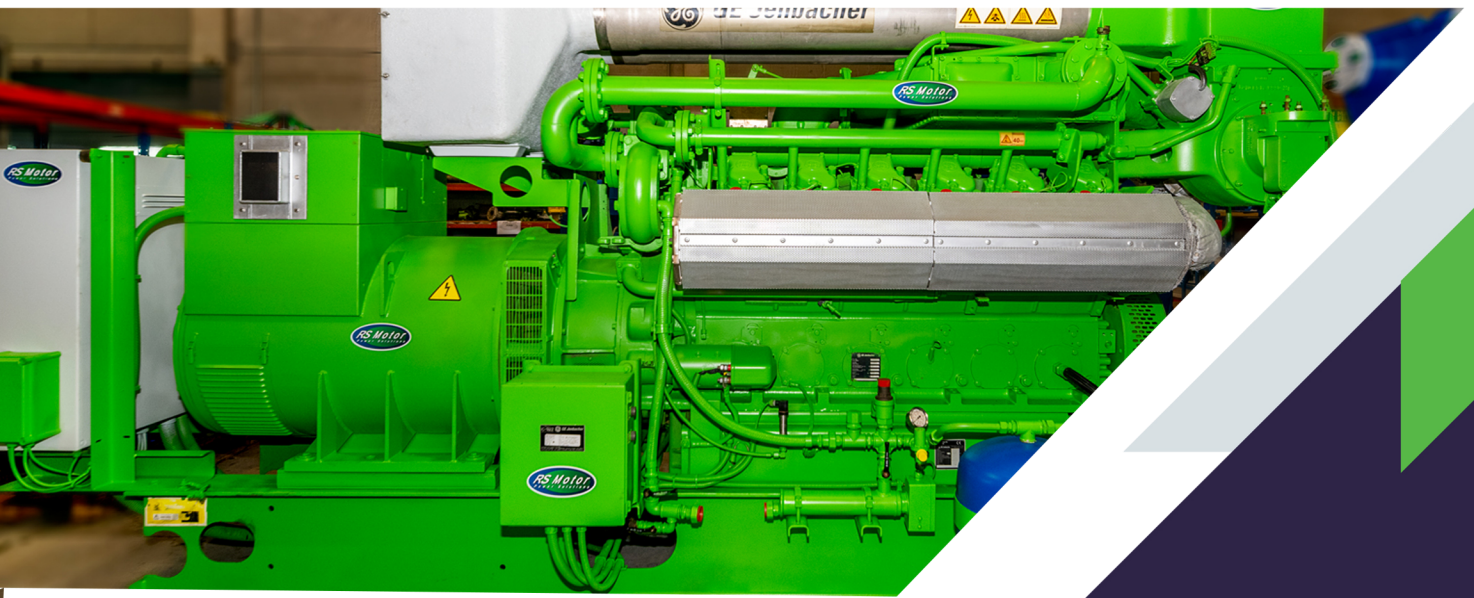
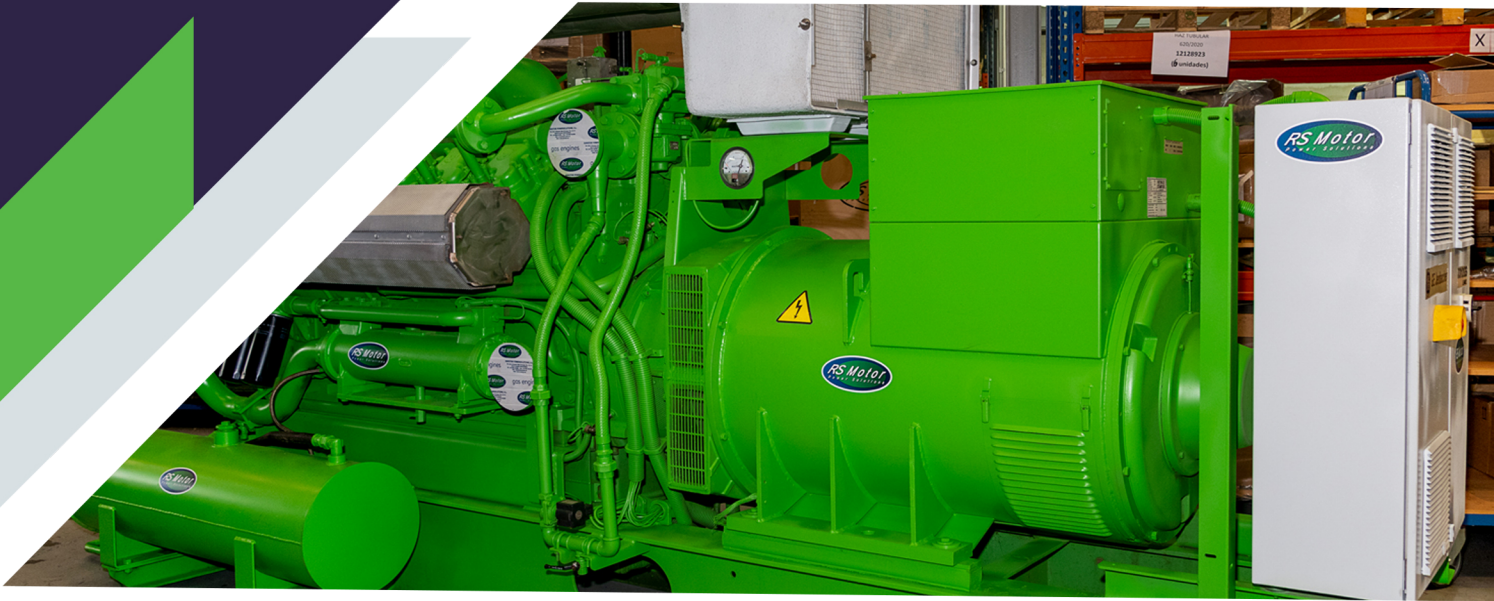
CURRENT STATUS

- ✓ Genset stopped, available for removing and delivery
- ✓ Engine color: green "engine manufacturer original colour"
- ✓ Needs medium-range maintenance
- ✓ Delivery: As it is where it is
- ✓ Dimensions: LxWxH (cm): 470x180x230
- ✓ Weight: 8.000 kg

Over 3,000 references
in stock and
over 40,000 coded references

Experience in supplies
to over 40 countries worldwide

DETAIL IMAGE



www.rsmotorps.com

For more information,
contact us: rsmotor@rsmotor.es

RS Motor
Power Solutions